

An aerial night view of a city, likely Tokyo, showing a dense urban landscape with numerous high-rise buildings and a river winding through the center. The city lights are visible, and the sky is dark. A semi-transparent dark band across the middle of the image contains the title text.

CRIME SPREE MAYHEM

CRIME DOES PAY

STORY SYNOPSIS

CRIME SPREE MAYHEM is a short film that follows Bobby Constance, the world's most notorious "criminal rockstar", as he navigates a world where criminals are offered the opportunity to stay out of jail so long as they can pay a weekly "fee"

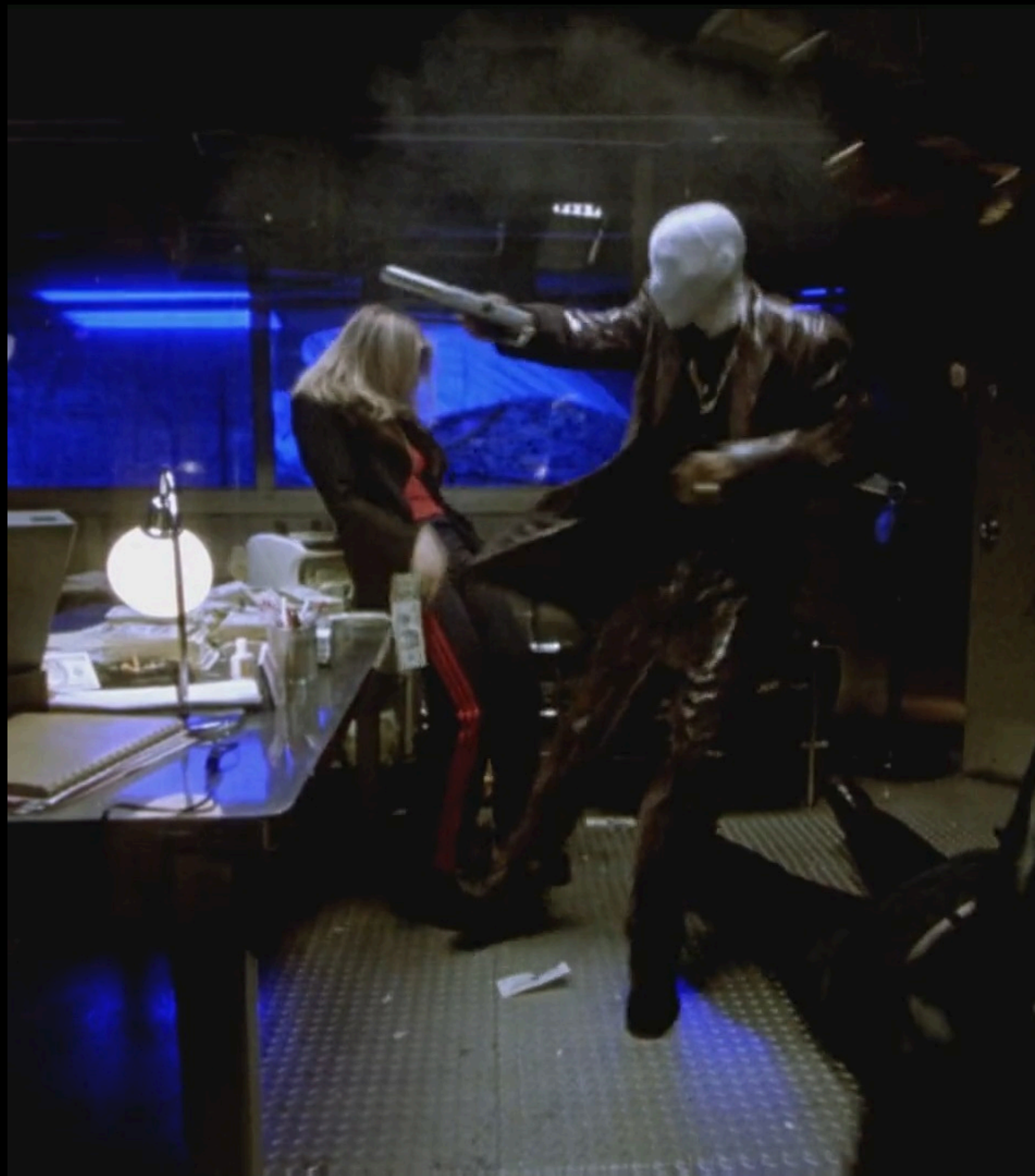
A criminal's fee is determined by the quantity and severity of their crimes, with criminals convicted of more crimes, or more serious crimes, having higher fees. Some criminals, in an effort to make their weekly fee, start committing even more crimes to raise the necessary funds. But the more crimes they commit, the higher their fee rises, resulting in a vicious cycle. Because of their extraordinary lifestyles, a number of these criminals are propelled into stardom, and come to be known as criminal rockstars

The short film has us following Bobby on one of his many heists. The story is told over three scenes



SCENE BREAKDOWN





OPENING - HOTEL ROOM

We find Bobby in a hotel room that has been torn apart – by none other than Bobby. His latest job has him looking for a package, but given his frantic schedule, Bobby didn't bother to get details. After disposing of a violent intruder, and speaking to his handler over mobular device, the package reveals itself. To Bobby's surprise and dismay, it is a young girl



RIISING ACTION - TAXI SHOOTOUT



Bobby and the young girl Emelia make their way to the airport in the back seats of a taxi. Though Bobby isn't interested in exchanging pleasantries, the spunky Emelia manages to get Bobby to pay attention to her, and what he surmises disturbs him. Before they arrive at the airport, the taxi is ambushed by unknown pursuers, and Bobby successfully fends them off



CLIMAX - AIRPORT

At the airport, Bobby is confronted by two men in suits who demand the girl. At the same time, the handler calls and shifts the terms of the deal, telling Bobby to hand over Emelia. In a moment of selflessness, Bobby decides to put the job to the side and protect Emelia. Although he is able to defeat the two men, his actions result in him being seriously injured, and as the short comes to a close, his fate is left undetermined

LOGLINE

In a world where criminals pay fees to stay out of jail (and gain fame for doing so) Bobby Constance – the world’s most famous “criminal rockstar” is tasked with delivering a mysterious package. When he discovers that it is a young girl, Bobby must decide whether to honour his contract or protect the girl, at the risk of his life and freedom



THE CHARACTERS



BOBBY CONSTANCE

CRIMINAL ROCKSTAR

Bobby Constance is the world's most notorious criminal rockstar with a record weekly fee of \$3 million. Bobby is blunt, professional, and constantly on the go. He is a criminal of all stripes, and has a harsh and impenetrable exterior. But is he unscrupulous?

Given his his exorbitant fee, he regularly picks up jobs without looking into the details

THAT EXPLAINS HIS CASE TODAY





EMELIA

YOUNG AND LOST

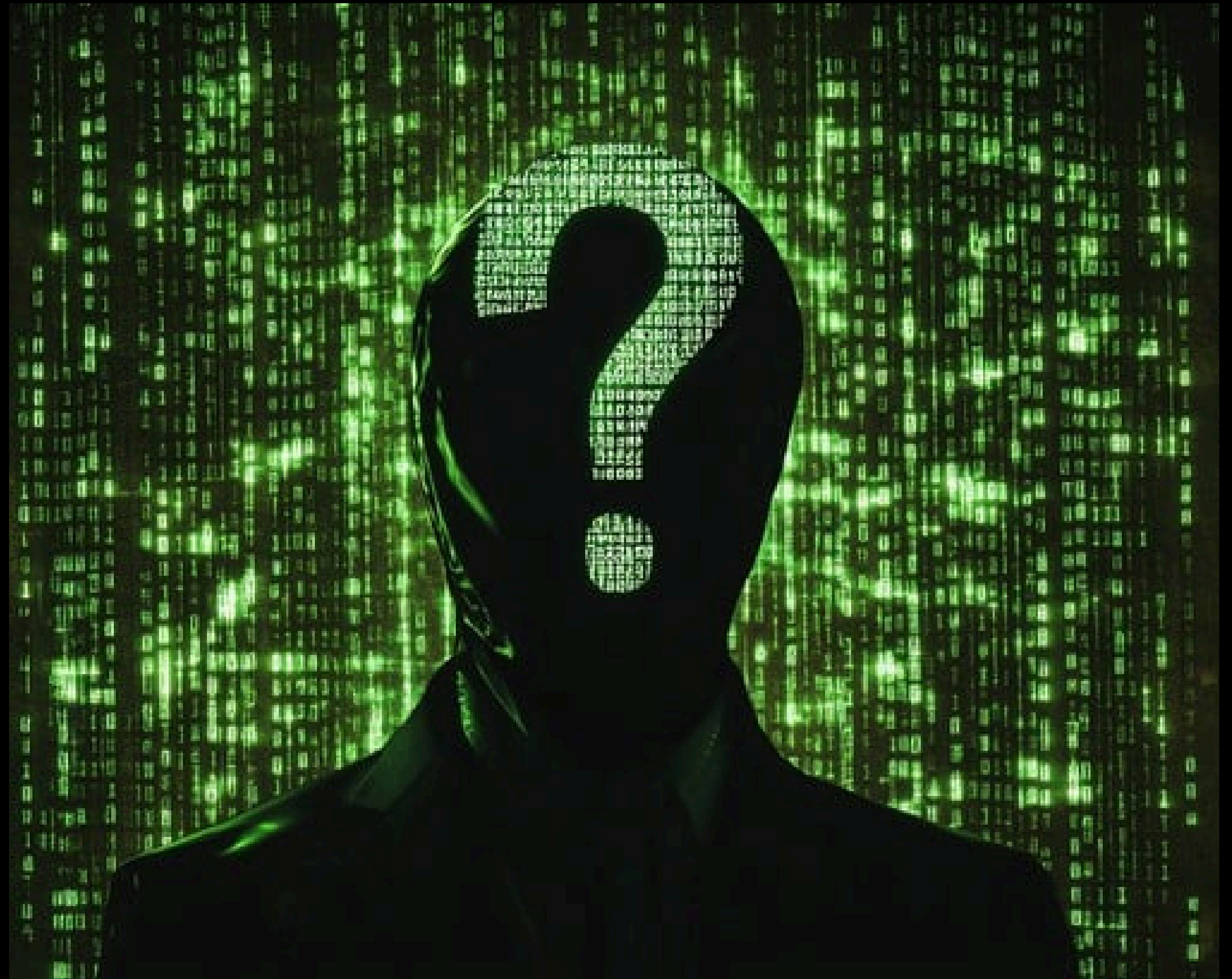
Emelia is a young Icelandic girl uncovered under mysterious circumstances. Turns out she is the package Bobby has been sent to retrieve

BUT FOR WHAT PURPOSE?

VOICE ON THE MOBULAR

AKA “FILTH RAY”

The Voice on the Mobular. The handler for Bobby's job in Tokyo. Calling himself “Filth Ray”, he is a criminal with many ties to the underworld, as well as with certain higher - ups...





THE WORLD

The world of CRIME SPREE MAYHEM is influenced by the technology and aesthetic of the 90s - an era that represented the end of the analog and the birth of the digital, an in-between age, where the prospects for technology were still optimistic

Hyper capitalism has taken hold, and everything is for sale, including freedom. Celebrities are starting to be broadcast on reality TELEVISOR, and people communicate via MOBULAR DEVICES



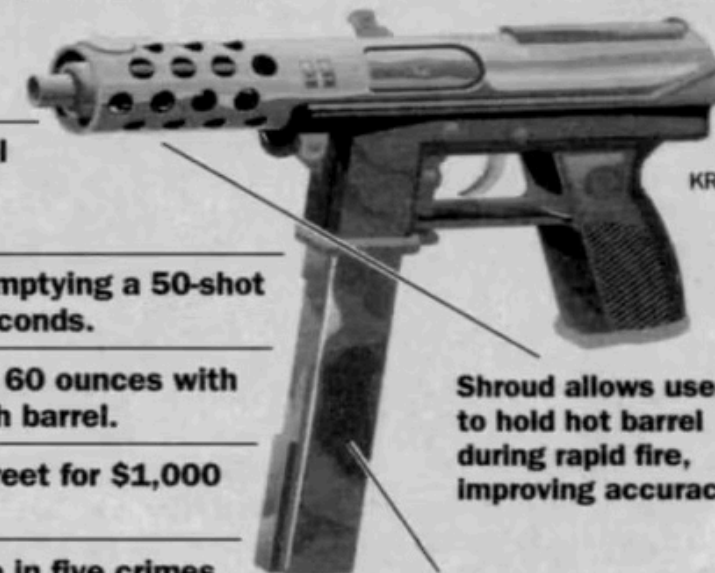


MURDER MADE EASY

With its perforated flash suppressor and long magazine, the **Tec-9** is to today's drug crews what the Tommy gun was to Prohibition-era gangsters. In 1994, when it became clear the **Tec-9** would be banned as an assault weapon, Intratec tripled production, making 102,682. Many thousands are still on the streets.

The gun:

- Has no external lock or safety system.
- Is capable of emptying a 50-shot magazine in seconds.
- Weighs a mere 60 ounces with a 12- to 18-inch barrel.
- Sells on the street for \$1,000 to \$1,500.
- Is linked to one in five crimes committed with an assault weapon.



Shroud allows user to hold hot barrel during rapid fire, improving accuracy

Magazine holds up to 50 rounds



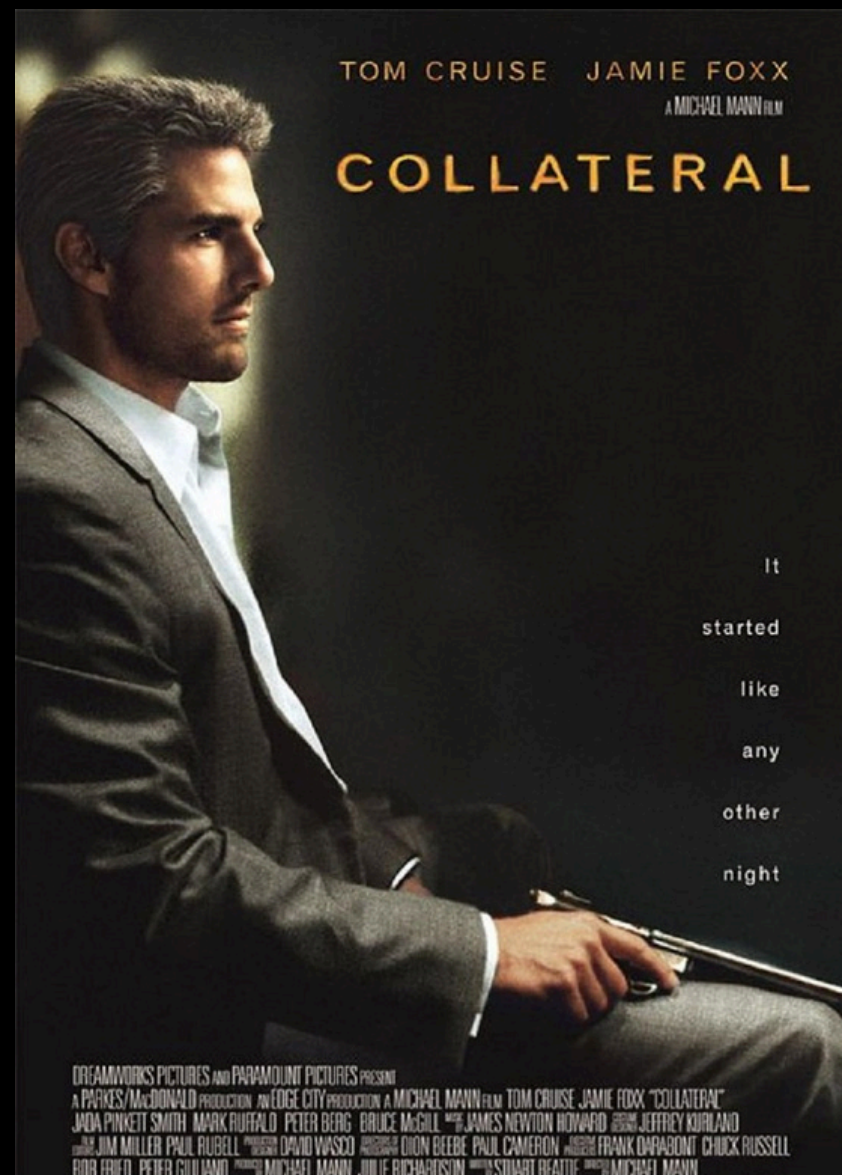
WHY NOW

CRIME SPREE MAYHEM works now because, although it may be absurd, it's actually not too far off from the reality we live in. Celebrities and powerful individuals often avoid real consequences for serious crimes thanks to their money and their fame. And many popular and fairly recent events show that committing crimes can actually propel someone into stardom



SIMILAR FILMS

As part of our pitch, we've included a list of comparable titles to give you a sense of what we want to create



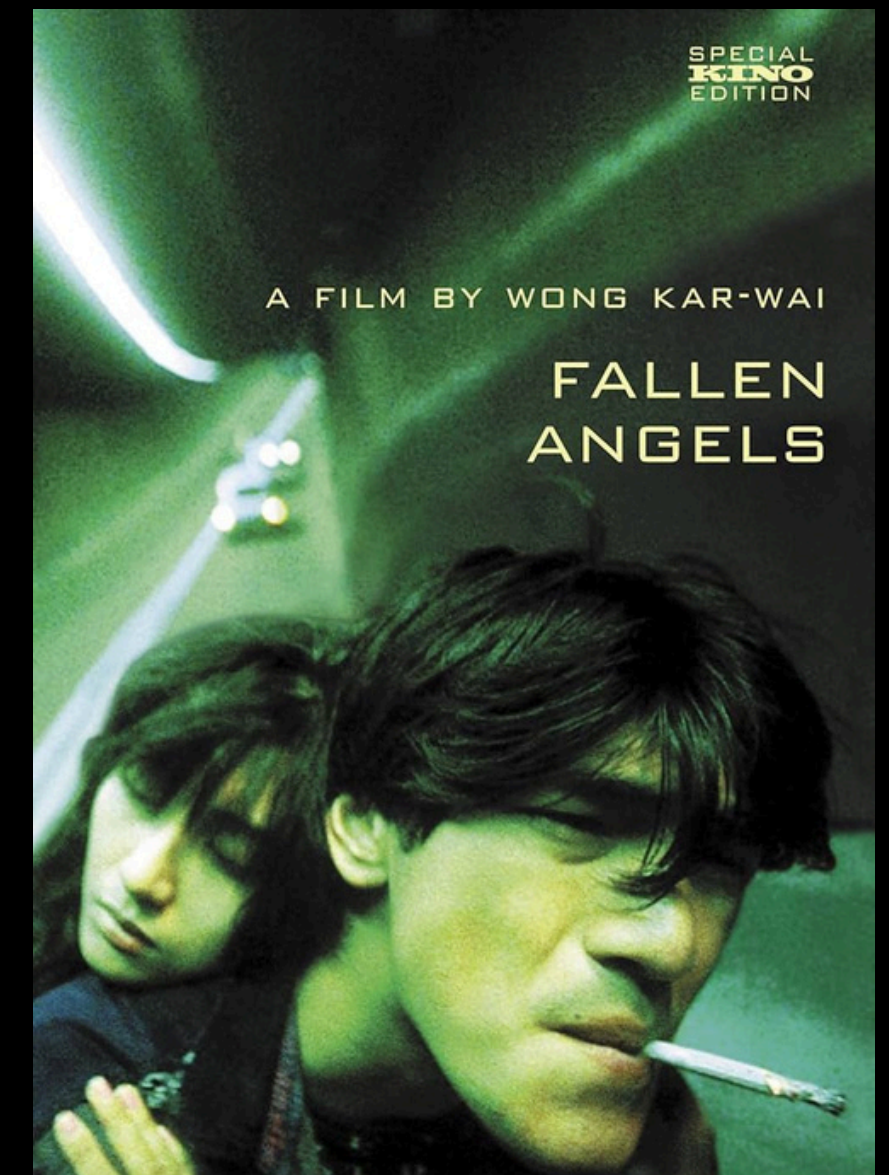
COLLATERAL
2004



DIE HARD
1988



COSMOPOLIS
2012



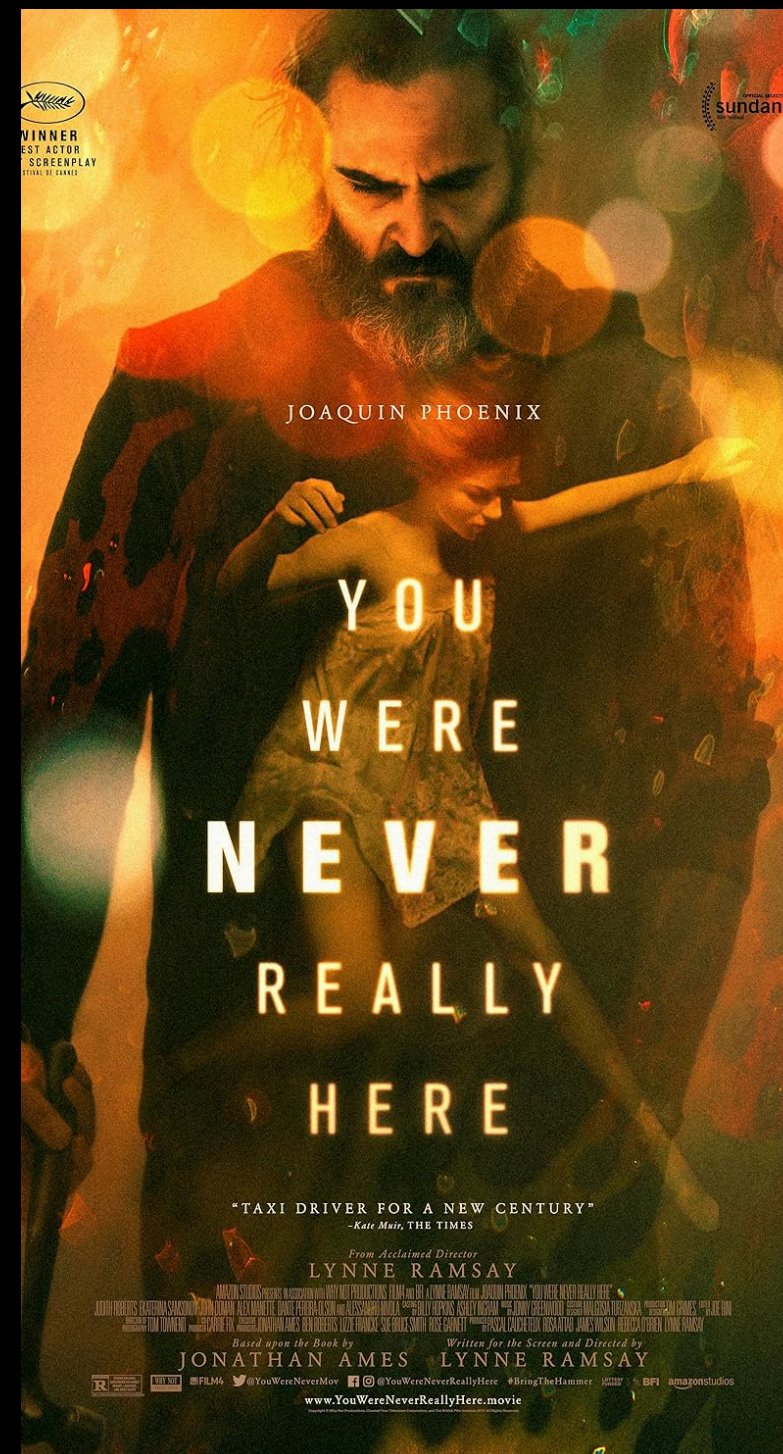
FALLEN ANGELS
1995



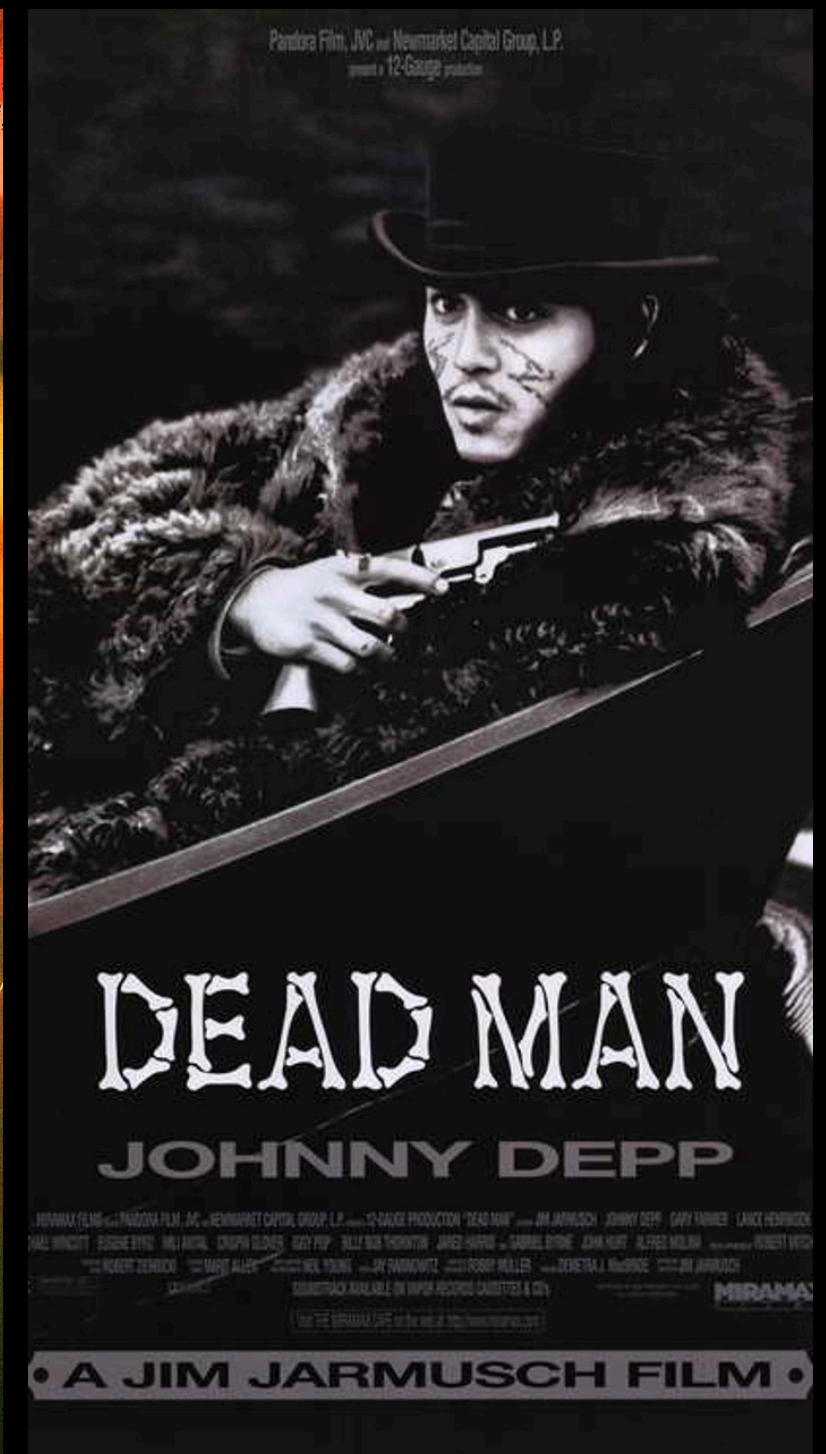
Belly (1998)
Bold colours



Strange Days
(1995)
Weird and
inventive tech



***You Were Never
Really Here*** (2017)
A conflicted
professional



Dead Man (1995)
Guitar-heavy
soundtrack

FESTIVALS



TORONTO SHORT FILM
FESTIVAL
MARCH 2026
CANADA



VANCOUVER SHORT FILM
FESTIVAL
JUNE 2026
CANADA



CANADA SHORTS FILM
FESTIVAL
DECEMBER 2026
CANADA



TRIBECA FILM FESTIVAL
JUNE 2026
USA



TELLURIDE FILM FESTIVAL
SEPTEMBER 2026
USA



LA ACTION FILMFEST
OCTOBER 2026
USA



SUNDANCE FILM
FESTIVAL
JANUARY 2026
USA



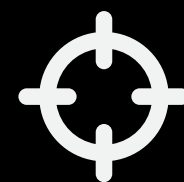
TORONTO INTERNATIONAL
FILM FESTIVAL
SEPTEMBER 2026
CANADA



BUSAN INTERNATIONAL
FILM FESTIVAL
OCTOBER 2026
SOUTH KOREA



AUDIENCE PROFILE

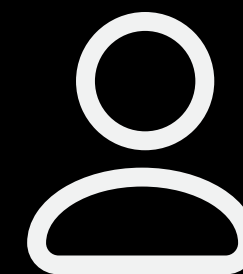


CRIME SPREE MAYHEM targets fans of stylish action flicks with anti-hero protagonists. It will resonate with fans of films that are both aesthetically pleasing and tightly written

Anyone who loves unique narratives that focus on real world issues through fiction

Viewers seeking an intense cinematic experience with visually captivating storytelling

DREAM CASTING



MEET THE TEAM



WRITER/DIRECTOR
ANTHONY MICHAEL PERRI



PRODUCER
DAVID MULTARI



CINEMATOGRAPHER
PAOLA CONTRERAS



ASSOCIATE PRODUCER
RUTHVIKA SANKINENI



EDITOR
MATT DIONNE



**1ST ASSISTANT
DIRECTOR**
CRISTIAN GOMEZ

THANK YOU

CRIME SPREE MAYHEM